



5th General Meeting
Network of Asian River Basin Organizations

Chiang Mai, Thailand • 15–18 May 2013

Leadership for IWRM Process

Case of MASL

Sudharma Elakanda

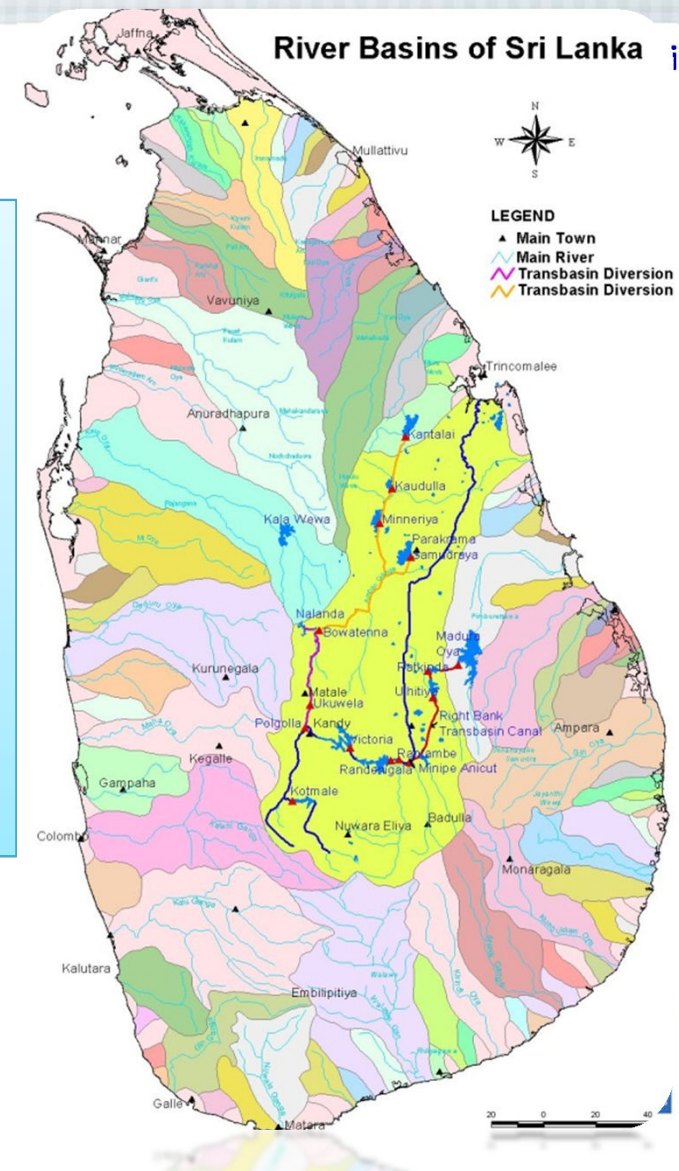
Project Director (DSWRPP)

Mahaweli Authority of Sri Lanka



History of Water Resources Sri Lanka

- ❑ Water Resources in Sri Lanka are relatively abundant.
- ❑ Therefore, allocation among different users or water using sub-sectors had not been a significant issue until recently.



Sectoral Approach to Water Resources Development in Sri Lanka

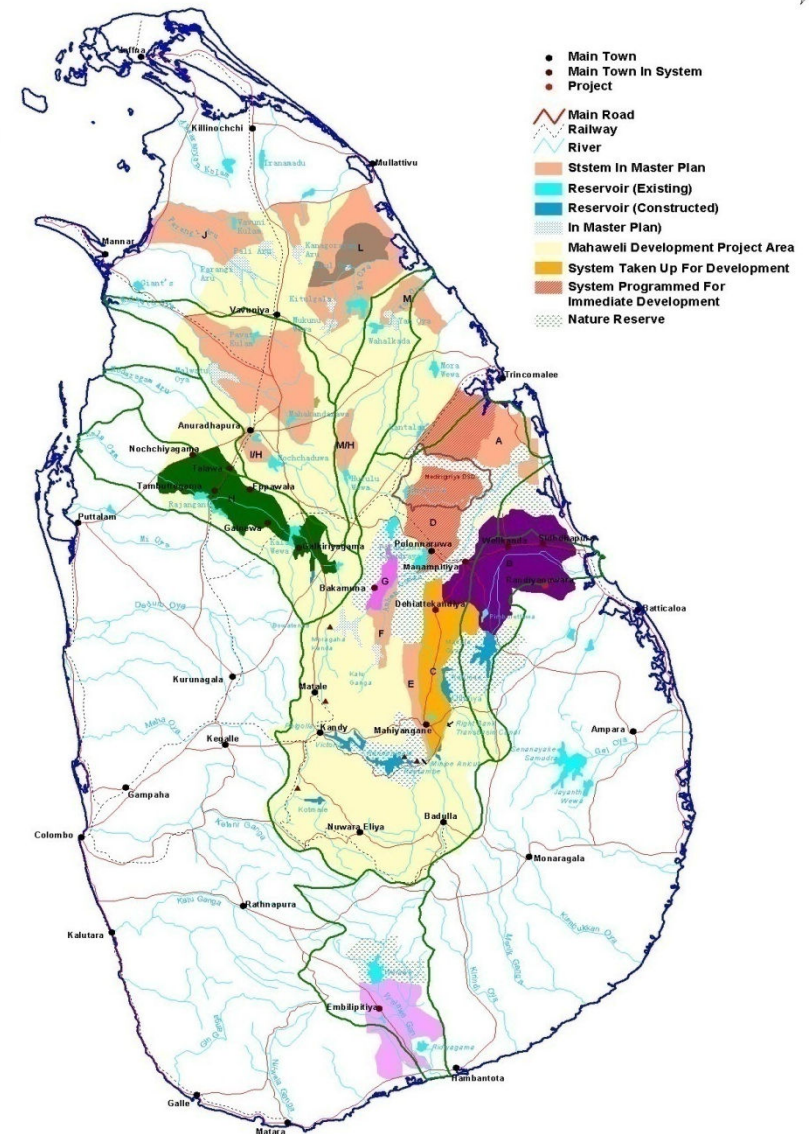
- Increased population and urbanization required sectoral developments:
- Irrigation, Water Supply & Sanitation, Hydropower, Flood Control, Fishing, Navigation, Recreation.

This Approach was Appropriate only to Resolve Immediate Sectoral Problems

Multipurpose Approach to Water Resources Development in Sri Lanka

To overcome limitations of sectoral approach, Area based Integrated, Multi-purpose development was adopted.

Mahaweli multipurpose development programme, is the best known example of this approach in South Asia.



The MASL Responsible for...

- Increase agricultural production,
- Hydro-power generation,
- Employment opportunities, and
- Settlement of landless poor and flood control in land area under the MASL .

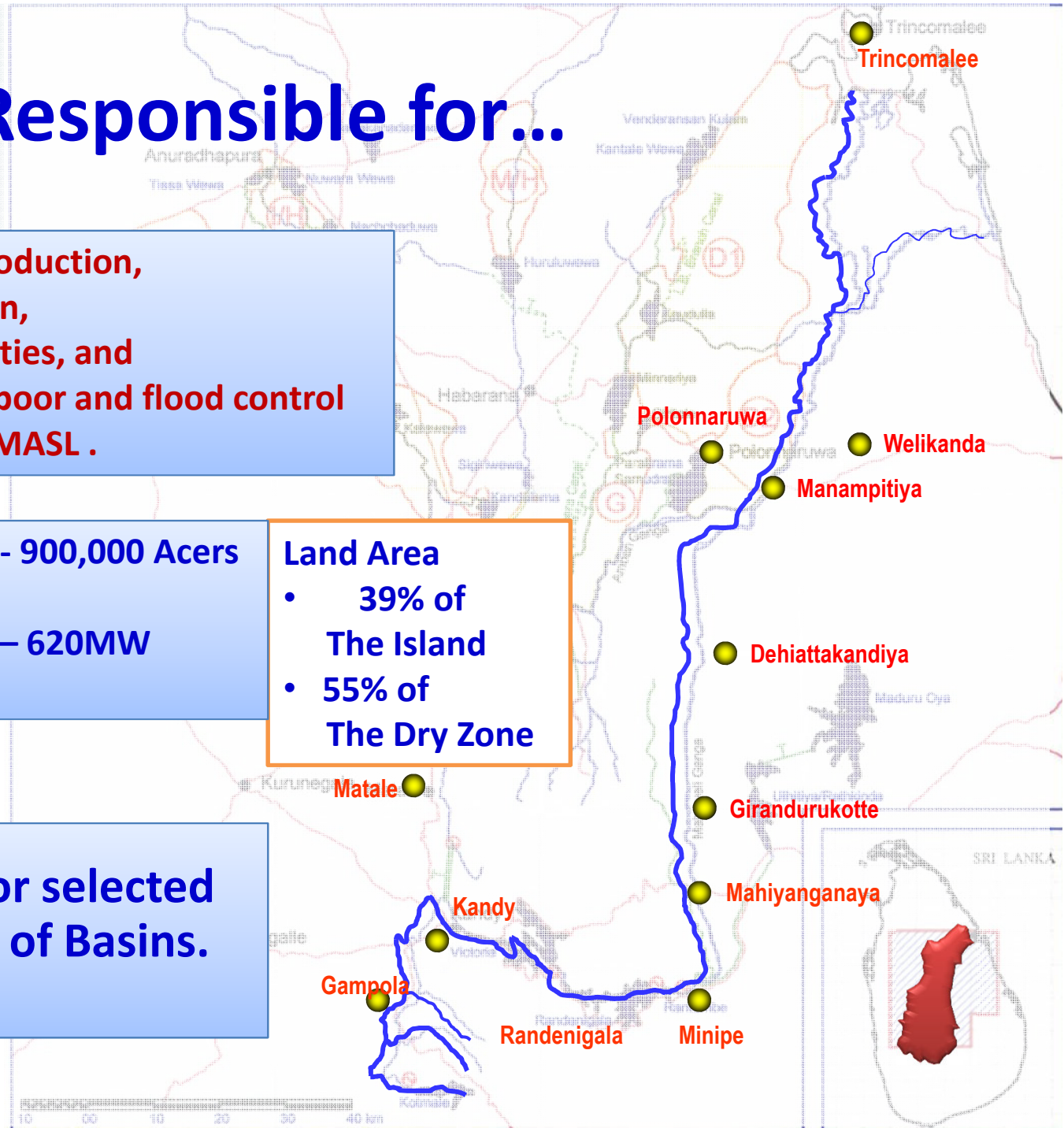
- Agriculture Development - 900,000 Acers

- Hydro-Power generation – 620MW

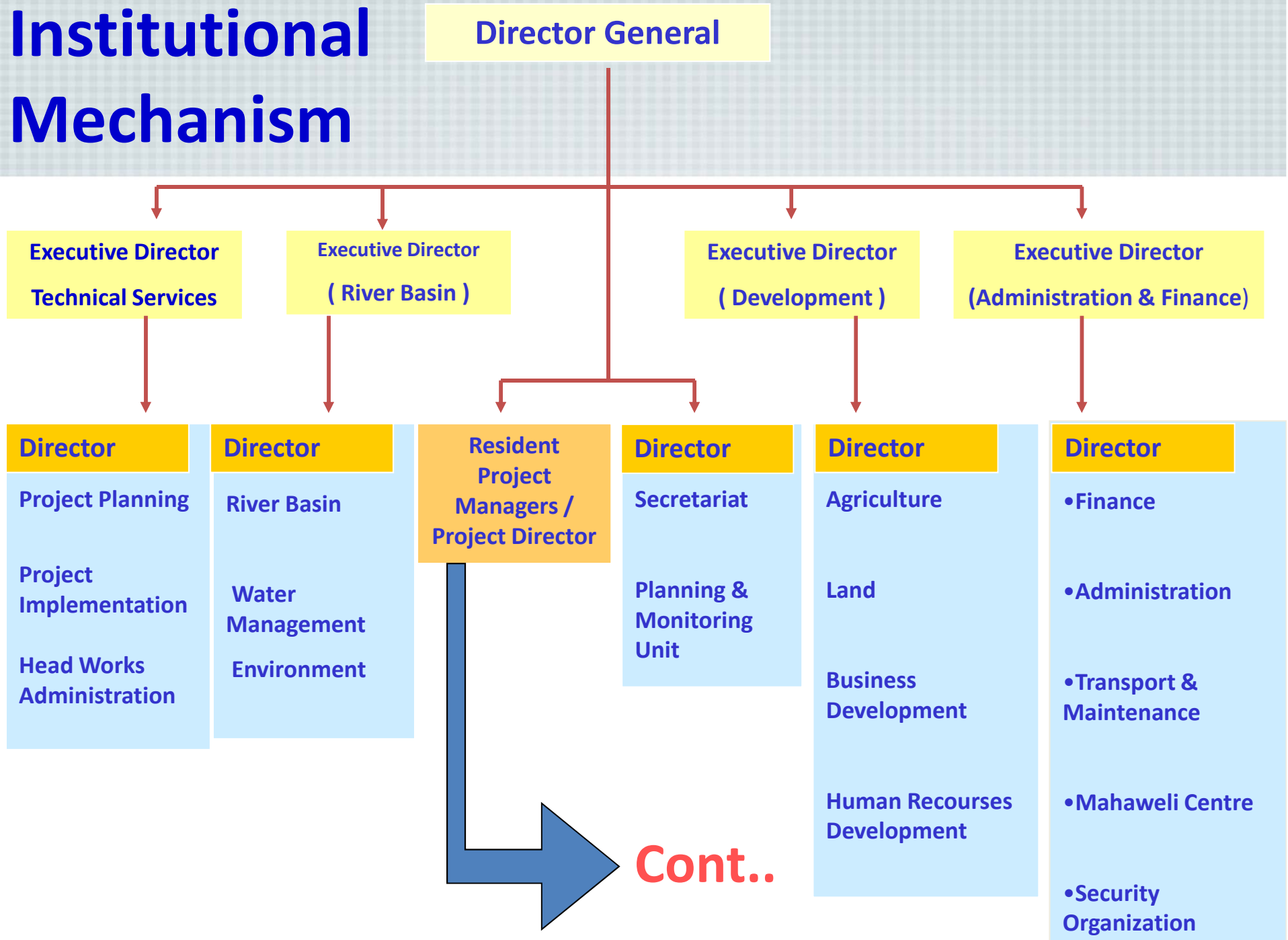
Land Area

- 39% of The Island
- 55% of The Dry Zone

‘One Stop Shop’, for selected “Special Areas” of Basins.

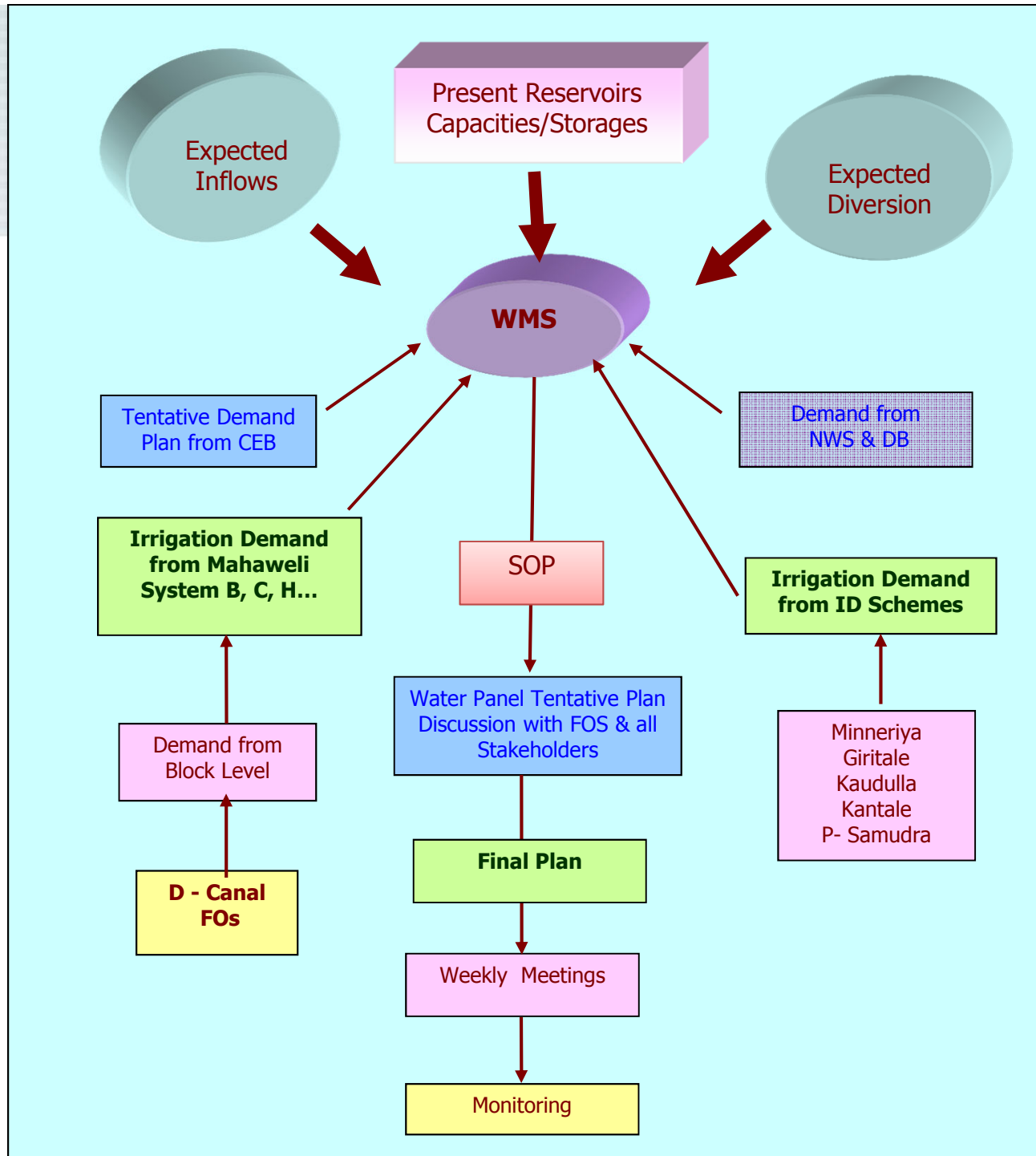


Institutional Mechanism



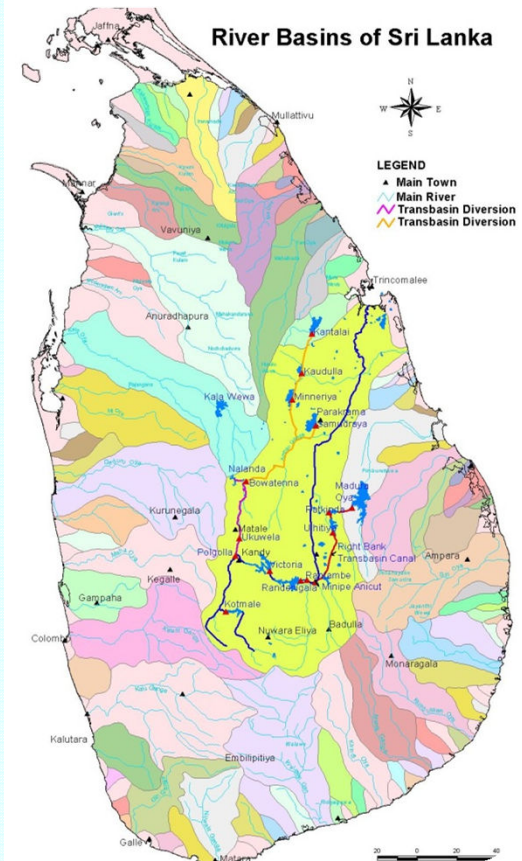
Water Allocation - A Key Role of the MASL

Water Allocation Planning Process of Mahaweli Authority



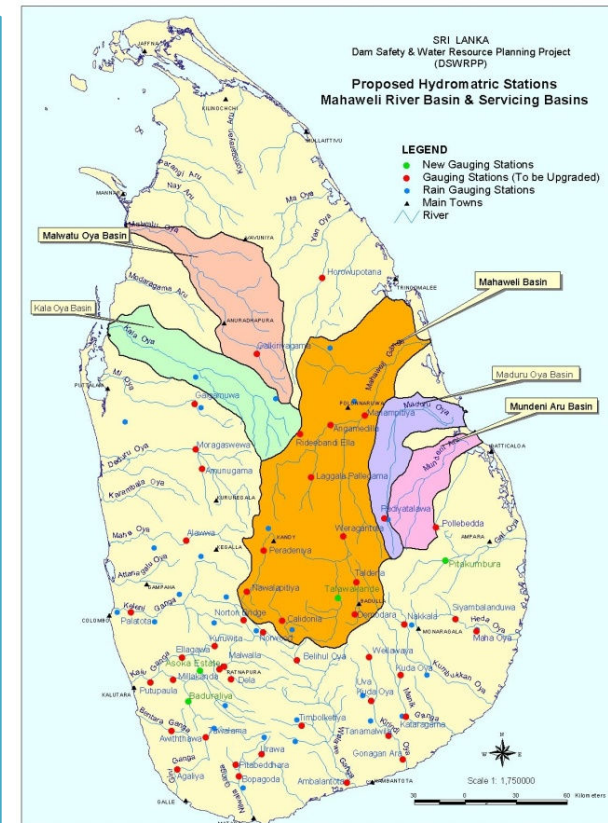
Dam Safety & Water Resource Planning Project (DSWRPP) Address current Issues.

- ❑ **“ Multi –sector Water Resources Planning” component of the Project following activities are being done.**
 - ❑ **A National Water Use Master Plan for the country will be developed.**
 - ❑ **Mahaweli Master Plan will be Reviewed.**
 - ❑ **Mundeni- Aru River Basin will be studied and prepare feasibility and a development Plan.**

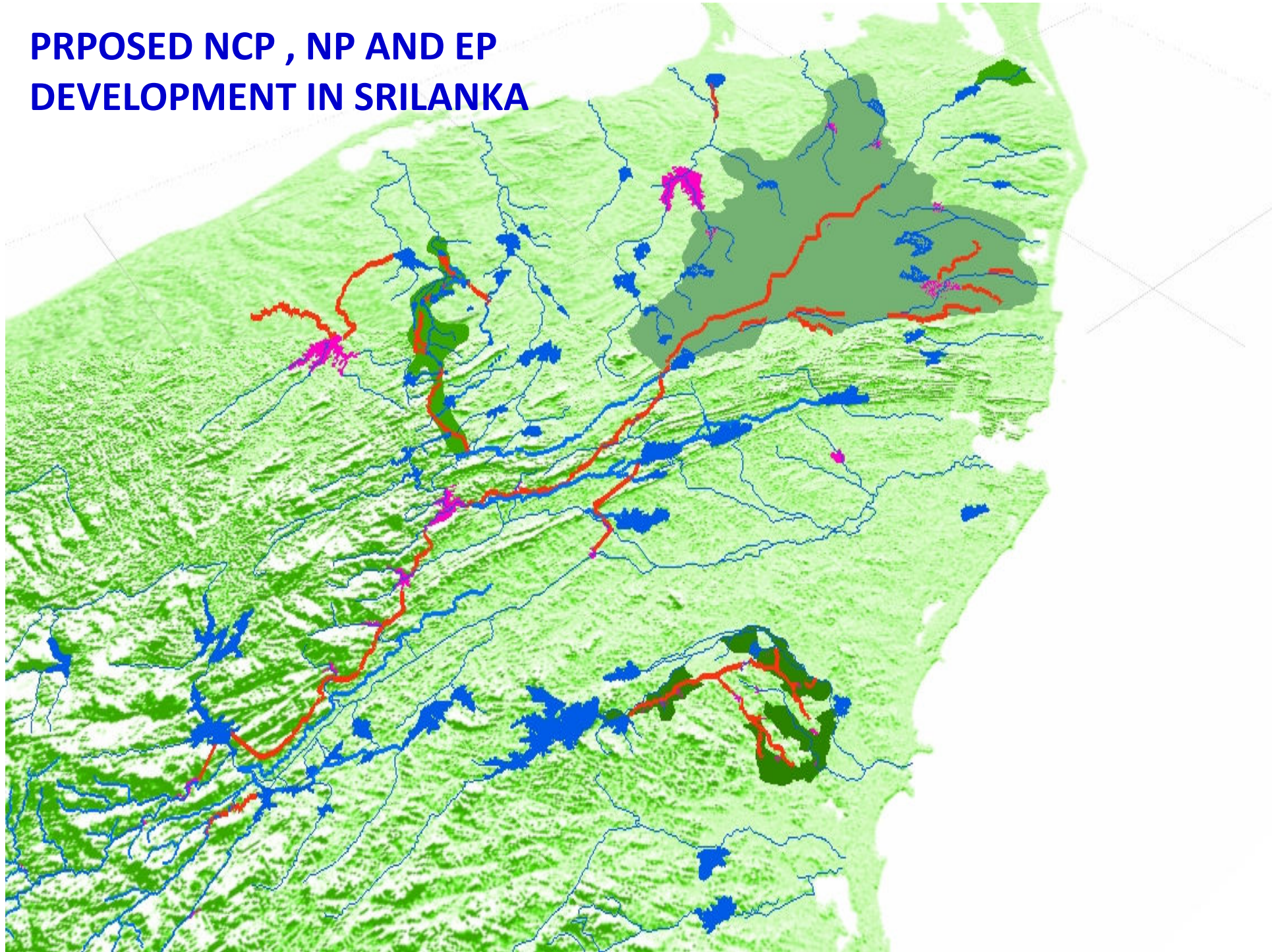


Continue

- ❑ Under the Component 2 of DSWRPP 122 Hydro metric stations will be established throughout the country which facilitate for sustainable management of water resources.
- ❑ Data exchange policy will be adopted.
- ❑ Modernize and establish Data Bank at Irrigation Department and Water Management Secretariat of MASL.
- ❑ Improve Flood Protection Procedure, Tools and Training.
- ❑ Establish Ground Water Monitoring System.



**PRPOSED NCP , NP AND EP
DEVELOPMENT IN SRILANKA**



MASL Fostering Leadership for IWRM Process through..

1. **Government Policy on Water Resources Development (Mahinda Chinthana) in the country.**
2. **Committed Leadership of Water Resources Ministry and related Projects.**
3. **Decision making through Consultation Process**
4. **Create Horizontal Interaction among all Water Sector involved agencies bring them to one table.**
5. **Stakeholder participation for all key activities**
6. **Capacity Building through Transfer of water sector Knowledge to next generation (ie . Undergraduates, School children, Community)**

Dunhida Falls
Nuwara Eliya District,
Sri Lanka.

**Thank You very much
for your Attention**

